

Packaging instructions

for KIFFE Trolleys



KIFFE GOLF
Perfektion, die Dich weiterbringt.

STEP

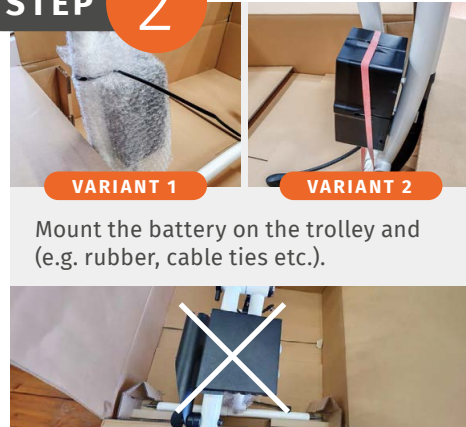
1



Place corner pads (left and right) on the long side of the box in the corners. No corner pad available: It is **IMPERATIVE** to use axle protection.

STEP

2



Mount the battery on the trolley and (e.g. rubber, cable ties etc.).

Please only send the scorecard holder if it is defective. Dismantle from trolley.

STEP

3



Fold the trolley without wheels and place it lengthways in the box. Ensure that the axles are in the corner pads.

STEP

4



Place the centre guard over the trolley and fix it in the box according to the fold. Ensure that the centre guard is positioned between the corner cushions.

STEP

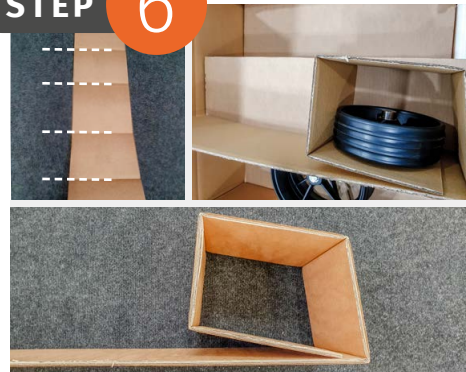
5



Secure the rear wheels on top of each other in the slot provided (left-hand side of the centre guard).

STEP

6



Fold the side inserts from the outside inwards by 90° at the folds. Place the front wheel in the side insert.

STEP

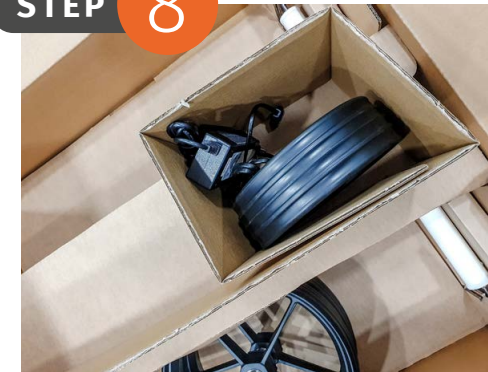
7



Insert side insert incl. front wheel to the right of the centre guard.

STEP

8



Charger / scorecard holder option: Can be placed with front wheel in side insert or optionally packed in its own small cardboard box.